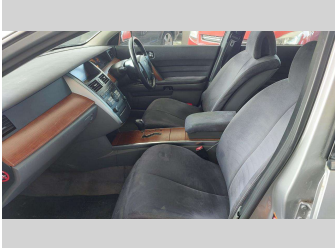


# 2005 Nissan MAXIMA TI CLTH 3.5 AUTO



## Purchase Price

Includes GST, Registration & Licensing

**\$2,700**

Finance may be available on this vehicle. Ask one of our friendly staff for more information.

**better<sup>®</sup>**

Gain peace of mind with Mechanical Breakdown Insurance. **Ask us how.**

**Ji JANSSEN**  
INSURANCE

## Top features

- » \*\*Air Conditioning Not...
- » 2WD
- » 4 Door Saloon
- » 6 Cylinder
- » ABS Braking
- » Alloy Wheels
- » Automatic
- » CD Player
- » Driving Lights
- » Electric Mirrors (Retr...
- » Electric Seat(s)
- » Electric Windows
- » Keyless Entry & Igniti...
- » Multi Airbags
- » Tow Bar
- » Traction Control

## Body Style

**4 door, Sedan**

## Odometer

**172,929 km**

## Engine

**3498 cc, Internal Combustion**

## Fuel Type

-

## Transmission

**Automatic, Front Wheel**

## Wheels

**Factory Alloys**

## VIN

**JN1BBUJ31A0022398**

## Interior

**Grey**

## Safety



Based on 2024 UCSR rating for 06-09 models

## Reg No.

**FGS452**

## Ext Colour

**Silver**

## History

**NZ New**

## Seats

**5 seats, Cloth**

## CO2 Emissions

☆☆☆☆☆☆

**300 grams/km**

## Energy Economy

☆☆☆☆☆☆

**Annual fuel cost of \$4,900**

**12.5L per 100km**

Cost per year is an estimate based on petrol price of \$2.80 per litre and an average distance of 14000 km. Emissions and Energy Economy figures standardised to 3P WLTP.

**Stock ID: 8814**



Merit Cars | Phone 06 281 1925 | Email [chris@meritcars.co.nz](mailto:chris@meritcars.co.nz)  
493 DEVON STREET EAST, STRANDON, New Plymouth, New Zealand  
[www.meritcars.co.nz](http://www.meritcars.co.nz)



4.89 | 204 reviews