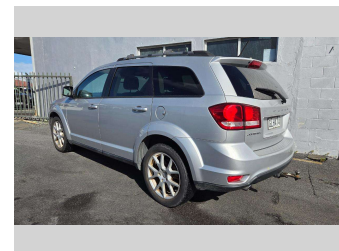
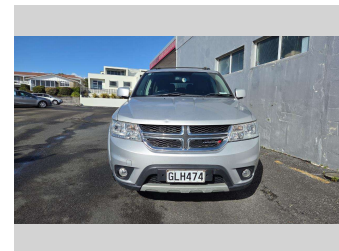
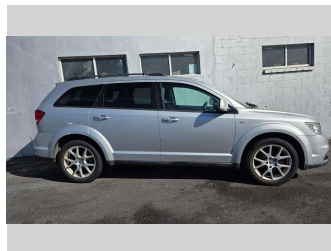



# 2012 Dodge JOURNEY 3.6L PETROL AUTO SXT




**Purchase Price** **\$6,450**  
Includes GST, Registration & Licensing

Finance may be available on this vehicle. Ask one of our friendly staff for more information.



Gain peace of mind with Mechanical Breakdown Insurance. **Ask us how.**



- Top features**
- » 2WD
  - » 6 Cylinder
  - » 7 Seater
  - » ABS Braking
  - » Alloy Wheels
  - » Bluetooth Stereo With...
  - » Cruise Control
  - » Driving Lights
  - » Electric Mirrors (Retr...
  - » Electric Windows
  - » Keyless Start
  - » Multi Airbags
  - » Rear Ventilation
  - » Roof Rack
  - » Stability Control
  - » Steering Wheel Control...
  - » Tinted Windows
  - » Tiptronic Auto

Body Style  
**5 door, Station Wagon**

Odometer  
**166,322 km**

Engine  
**3605 cc, Internal Combustion**

Fuel Type  
**Petrol**

Transmission  
**Automatic, Front Wheel**

Wheels  
**Factory Alloys**

VIN  
**3C4PDCJG7CT324117**

Interior  
**Black**

Safety



Based on 2024 UCSR rating for 08-16 models

Reg No.  
**GLH474**

Ext Colour  
**Silver**

History  
**NZ New**

Seats  
**7 seats, Cloth**

CO2 Emissions  
★☆☆☆☆  
**279 grams/km**

Energy Economy  
★☆☆☆☆

**Annual fuel cost of \$4,550**  
**11.6L per 100km**

Cost per year is an estimate based on petrol price of \$2.80 per litre and an average distance of 14000 km. Emissions and Energy Economy figures standardised to 3P WLTP.

**Stock ID: 8796**