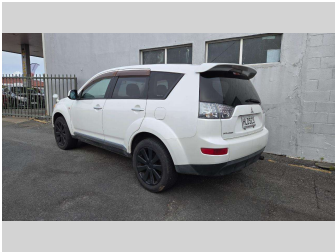
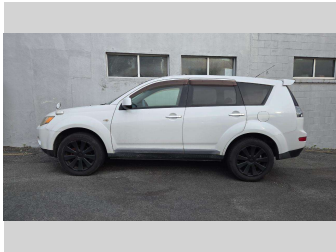
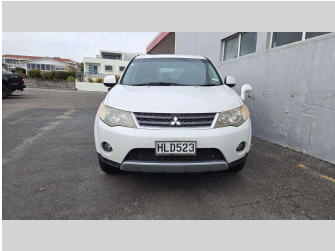


2006 Mitsubishi Outlander



Purchase Price

\$5,950

Includes GST, Registration & Licensing

Finance may be available on this vehicle. Ask one of our friendly staff for more information.

better[®]

Gain peace of mind with Mechanical Breakdown Insurance. **Ask us how.**

JANSSEN
INSURANCE

Top features

- » 2WD
- » 4 Wheel Drive
- » 7 Seater
- » ABS Braking
- » Air Bags
- » Auto Headlights
- » Driving Lights
- » Electric Mirrors
- » Electric Windows
- » Keyless Entry & Igniti...
- » Note " Drivers Door Ke...
- » Power Steering
- » Spoiler
- » Steering Wheel Control...
- » Tinted Windows
- » Tiptronic Auto

Body Style

Station Wagon

Odometer

164,133 km

Engine

2350 cc, Internal Combustion

Fuel Type

-

Transmission

CVT

Wheels

Custom Alloys

VIN

7AT0CJ3MX14022147

Interior

-

Safety



Based on 2024 UCSR rating for 06-12 models

Reg No.

HLD523

Ext Colour

White

History

Ex-Overseas

Seats

7 seats

CO2 Emissions

★★★★☆☆

232 grams/km

Energy Economy

★★★★☆☆

Annual fuel cost of \$3,800

9.7L per 100km

Cost per year is an estimate based on petrol price of \$2.80 per litre and an average distance of 14000 km. Emissions and Energy Economy figures standardised to 3P WLTP.

Stock ID: 8790



Merit Cars | Phone 06 281 1925 | Email chris@meritcars.co.nz
493 DEVON STREET EAST, STRANDON, New Plymouth, New Zealand
www.meritcars.co.nz



★★★★★
4.89 | 199 reviews