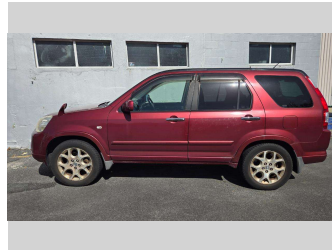
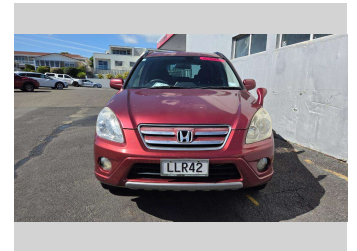


2006 Honda Crv



Purchase Price **\$4,350**
Includes GST, Registration & Licensing

Finance may be available on this vehicle. Ask one of our friendly staff for more information.

Gain peace of mind with Mechanical Breakdown Insurance. **Ask us how.**

Top features

- » 4 Wheel Drive
- » ABS Braking
- » Air Conditioning
- » Automatic
- » Dual Airbags
- » Electric Windows
- » i-VTEC
- » Paintwork Faded & Clea...
- » Power Steering
- » Rear Wiper
- » Remote Boot Release
- » Remote Central Locking
- » Reversing Camera
- » Tow Bar

Body Style
5 door, Station Wagon

Odometer
129,956 km

Engine
2350 cc, Internal Combustion

Fuel Type
Petrol

Transmission
Automatic, 4WD

Wheels
Factory Alloys

VIN
7AT08G7HX18101677

Interior
Black

Safety
 3 star safety rating

Based on 2025 UCSR rating for 02-06 models

Reg No.
LLR42

Ext Colour
Red

History
Ex-Overseas

Seats
5 seats, Cloth

CO2 Emissions
★ ★ ☆ ☆ ☆ ☆
244 grams/km

Energy Economy
★ ☆ ☆ ☆ ☆ ☆
Annual fuel cost of \$4,000
10.2L per 100km

Cost per year is an estimate based on petrol price of \$2.80 per litre and an average distance of 14000 km. Emissions and Energy Economy figures standardised to 3P WLTP.

Stock ID: 8905