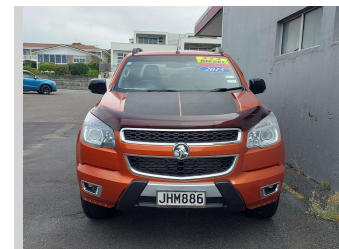
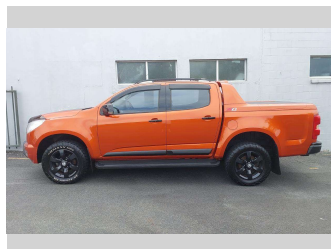
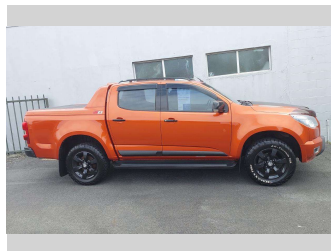


2015 Holden COLORADO Z71 DC PU 2.8D/4WD/6



Purchase Price

\$26,995

Includes GST, Registration & Licensing

Indicative repayments

\$176.14 per week*

Based on a 208 week term & no deposit.
Total repayments (208) = **\$36,637.46**

better®

Gain peace of mind with
Mechanical Breakdown
Insurance. **Ask us how.**

Ji JANSSEN
INSURANCE

Top features

- » 4X4
- » ABS Braking
- » Alloy Wheels
- » Bluetooth Stereo
- » Climate Control Air Co...
- » Cruise Control
- » Descent Mode
- » Diesel Turbo
- » Driving Lights
- » Electric Mirrors (Retr...
- » Electric Windows
- » Heated Electric Leathe...
- » Multi Airbags
- » Parking Sensors
- » Remote Central Locking
- » Roof Rails
- » Running Boards
- » Stability Control

Body Style

4 door, Ute

Odometer

93,805 km

Engine

2776 cc, Internal Combustion

Fuel Type

Diesel

Transmission

Automatic, 4WD

Wheels

Factory Alloys

VIN

MMU148PK0GH604801

Interior

Grey

Safety



Based on 2025 UCSR rating
for 12-20 models

Reg No.

JHM886

Ext Colour

Orange

History

NZ New, 7 owners

Seats

5 seats, Cloth

CO2 Emissions

★☆☆☆☆

277 grams/km

Energy Economy

★☆☆☆☆

Annual fuel cost of \$3,980
10.4L per 100km

Cost per year is an estimate based
on diesel price of \$2.00 per litre and
an average distance of 14000 km.
Includes Road User Charges (RUC).
Emissions and Energy Economy
figures standardised to 3P WLTP.

Stock ID: 8871



Merit Cars | Phone 06 281 1925 | Email chris@meritcars.co.nz
493 DEVON STREET EAST, STRANDON, New Plymouth, New Zealand
www.meritcars.co.nz



★★★★★
4.89 | 230 reviews

* Merit Cars is not a lender nor a financial adviser. Any amounts displayed should not be seen as an offer of finance or taken as financial advice. The interest rate, fees and loan term used in this calculation may not actually represent those available from lenders. Actual interest rates, fees and loan terms will vary per lender and are typically based on an assessment of your credit risk and responsible lending criteria. Any repayment amounts displayed are indicative only and have been calculated using several other indicative inputs. The interest rate used in this calculation is an arbitrary 14.70%, however exact interest rates vary per lender. The term of the loan used in this calculation is 208 week. Exact terms available vary per lender although options typically include 6, 12, 18, 24, 36, 48 and 60 months. This calculation also includes two typical mandatory fees charged by lenders. These are an account admin fee of \$8.00 per month (other payment frequencies may be available) and a one-off establishment fee of \$386.35. Typically, this fee can be paid upfront or, as in this calculation, be capitalised over the contract term, ie. included in the loan amount. These fees can vary per lender and other non-mandatory fees and charges may also apply. The total amount of repayments has been calculated by multiplying 208 weekly repayments (based on a 208 week term) by the weekly repayment amount of \$176.14 which equals \$36,637.46. This calculator does not consider any of your own personal circumstances and we strongly suggest you seek budgeting advice prior to committing to any loan contract. Responsible lending criteria and lender terms and conditions will likely apply to any finalised loan contract. Proof of security and/or vehicle insurance may also be required before proceeding.

Vehicle data updated 29 January 2026 09:48