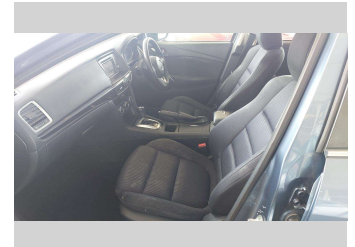
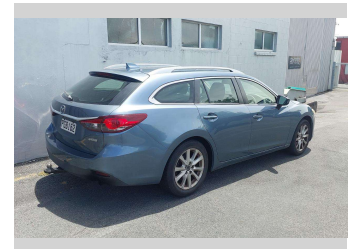


2013 Mazda 6 GLX 2.2 Diesel



Purchase Price

\$5,000

Includes GST, Registration & Licensing

Finance may be available on this vehicle. Ask one of our friendly staff for more information.

better

Gain peace of mind with Mechanical Breakdown Insurance. **Ask us how.**

JANSSEN
INSURANCE

Top features

- » 2WD
- » ABS Braking
- » Air Conditioning
- » Alloy Wheels
- » Bluetooth CD Player
- » Cruise Control
- » Diesel Turbo
- » Electric Mirrors
- » Electric Windows
- » i-Stop
- » Keyless Start
- » Multi Airbags
- » Remote Central Locking
- » Reversing Camera
- » Roof Rails
- » Stability Control
- » Steering Wheel Control...
- » Tiptronic Auto

Body Style

5 door, Station Wagon

Odometer

232,417 km

Engine

2184 cc, Internal Combustion

Fuel Type

Diesel

Transmission

Automatic, Front Wheel

Wheels

Factory Alloys

VIN

JM0GJ102100106936

Interior

Black

Safety



Based on 2025 UCSR rating for 12-23 models

Reg No.

PGB162

Ext Colour

Blue

History

NZ New

Seats

5 seats, Cloth

CO2 Emissions

★★★★☆

173 grams/km

Energy Economy

★★★★☆☆

Annual fuel cost of \$2,880

6.5L per 100km

Cost per year is an estimate based on diesel price of \$2.00 per litre and an average distance of 14000 km. Includes Road User Charges (RUC). Emissions and Energy Economy figures standardised to 3P WLTP.

Stock ID: 8866



Merit Cars | Phone 06 281 1925 | Email chris@meritcars.co.nz
493 DEVON STREET EAST, STRANDON, New Plymouth, New Zealand
www.meritcars.co.nz



4.90 | 241 reviews