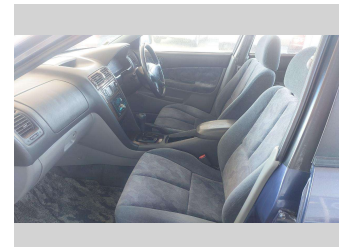
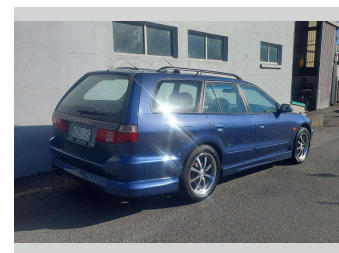



# 1996 Mitsubishi Legnum




**Purchase Price** **\$1,500**  
Includes GST, Registration & Licensing

Finance may be available on this vehicle. Ask one of our friendly staff for more information.



Gain peace of mind with Mechanical Breakdown Insurance. **Ask us how.**



**Top features**

- » \*\*R/H Mirror Doesn't R...
- » \*\*Recent WOF Failure S...
- » 2WD
- » 5 Door Hatch
- » 6 Cylinder
- » ABS Braking
- » Alloy Wheels
- » Body Kit (Factory)
- » CD Player With USB
- » Central Locking
- » Driving Lights
- » Dual Airbags
- » Electric Mirrors
- » Electric Windows
- » Roof Rails
- » Tiptronic Auto

Body Style  
**5 door, Station Wagon**

Odometer  
**309,334 km**

Engine  
**1990 cc, Internal Combustion**

Fuel Type  
**Petrol**

Transmission  
**4-Speed Auto (Tiptronic), Front**

Wheels  
**17", Custom Alloys**

VIN  
**7A8CJ300702000762**

Interior  
**Grey**

Safety



Based on 2025 VSRR rating

Reg No.  
**AZB145**

Ext Colour  
**Blue**

History  
**Ex-Overseas**

Seats  
**5 seats, Cloth**

CO2 Emissions  
**★ ★ ☆ ☆ ☆ ☆**

Energy Economy  
**☆☆☆☆☆☆**



**Annual fuel cost not available**

Energy Consumption unknown.

**Stock ID: 8946**



Merit Cars | Phone 06 281 1925 | Email [chris@meritcars.co.nz](mailto:chris@meritcars.co.nz)  
493 DEVON STREET EAST, STRANDON, New Plymouth, New Zealand  
[www.meritcars.co.nz](http://www.meritcars.co.nz)



4.90 | 246 reviews