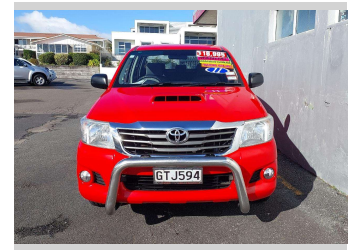
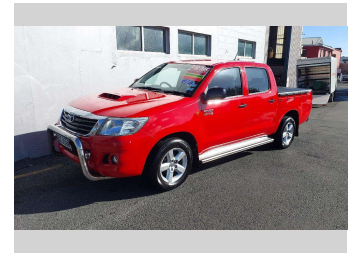



2011 Toyota HILUX 2WD 3.0TD DC UTE 5M



Purchase Price **\$18,995**
Includes GST, Registration & Licensing

Indicative repayments
\$125.22 per week*
Based on a 208 week term & no deposit.
Total repayments (208) = **\$26,045.3**



Gain peace of mind with
Mechanical Breakdown Insurance. Ask us how.



Top features

- » 2WD
- » 5 Speed Manual
- » ABS Braking
- » Air Conditioning
- » Alloy Wheels
- » Bluetooth Stereo With...
- » Cruise Control
- » Diesel Turbo
- » Driving Lights
- » Dual Airbags
- » Electric Mirrors
- » Electric Windows
- » Nudge Bar
- » Remote Central Locking
- » Reversing Camera
- » Running Boards
- » Steering Wheel Control...
- » Tinted Windows

Body Style
4 door, Ute

Odometer
255,843 km

Engine
2982 cc, Internal Combustion

Fuel Type
Diesel

Transmission
5-Speed Manual, Rear Wheel

Wheels
Factory Alloys

VIN
MR0EZ12G004011733

Interior
Grey

Safety


Based on 2023 UCSR rating for 05-15 models

Reg No.
GTJ594

Ext Colour
Red

History
NZ New

Seats
5 seats, Cloth


CO2 Emissions
★ ★ ☆ ☆ ☆ ☆
248 grams/km


Energy Economy
★ ★ ☆ ☆ ☆ ☆

Annual fuel cost of \$3,670
9.3L per 100km

Cost per year is an estimate based on diesel price of \$2.00 per litre and an average distance of 14000 km. Includes Road User Charges (RUC). Emissions and Energy Economy figures standardised to 3P WLTP.

Stock ID: 8579

 Merit Cars | Phone 06 281 1925 | Email chris@meritcars.co.nz
493 DEVON STREET EAST, STRANDON, New Plymouth, New Zealand
www.meritcars.co.nz

 **4.88** | 98 reviews

* Merit Cars is not a lender nor a financial adviser. Any amounts displayed should not be seen as an offer of finance or taken as financial advice. The interest rate, fees and loan term used in this calculation may not actually represent those available from lenders. Actual interest rates, fees and loan terms will vary per lender and are typically based on an assessment of your credit risk and responsible lending criteria. Any repayment amounts displayed are indicative only and have been calculated using several other indicative inputs. The interest rate used in this calculation is an arbitrary 14.70%, however exact interest rates vary per lender. The term of the loan used in this calculation is 208 week. Exact terms available vary per lender although options typically include 6, 12, 18, 24, 36, 48 and 60 months. This calculation also includes two typical mandatory fees charged by lenders. These are an account admin fee of \$8.00 per month (other payment frequencies may be available) and a one-off establishment fee of \$386.35. Typically, this fee can be paid upfront or, as in this calculation, be capitalised over the contract term, ie. included in the loan amount. These fees can vary per lender and other non-mandatory fees and charges may also apply. The total amount of repayments has been calculated by multiplying 208 weekly repayments (based on a 208 week term) by the weekly repayment amount of \$125.22 which equals \$26,045.30. This calculator does not consider any of your own personal circumstances and we strongly suggest you seek budgeting advice prior to committing to any loan contract. Responsible lending criteria and lender terms and conditions will likely apply to any finalised loan contract. Proof of security and/or vehicle insurance may also be required before proceeding.